

Eclipse Process Analytics

Analysis by Gas Chromatography



Engineered Solutions, Guaranteed Results.



WASSON-ECE
INSTRUMENTATION

Eclipse Technology

- High speed programmable oven
- Full electronic pressure control
- Advanced multi-dimensional chromatography
- High-resolution local interface
- Superior data handling capability



Wasson-ECE Introduces the Next Generation of On-Line Gas Chromatographs

Introducing Eclipse, the world's most advanced process gas chromatograph. Utilizing the latest technology in high-speed programmable oven gas chromatography, Eclipse gives you the ability to perform more complex chromatography on-line. You do not need to feel limited to simple chromatographic separations any longer. Wasson-ECE is about to reveal what a process GC should be.

The Proof is in the Peaks

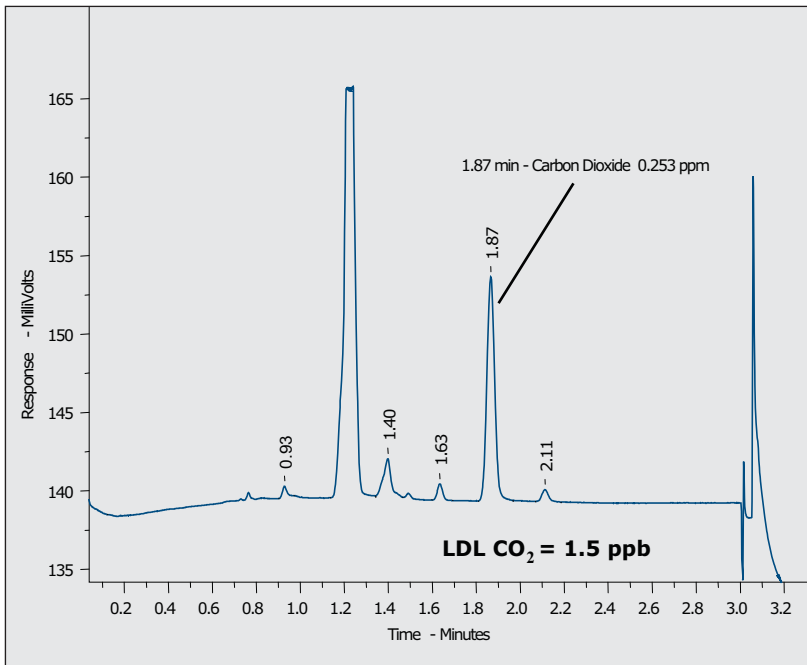
Eclipse was built by chromatographers, for chromatographers. Each portion of the system was designed to use the best chromatography technology available. The advanced programmable oven and electronic pressure control ensure that consistent retention times are achieved; even when running very fast capillary analyses.

A Change is Coming

There has always been a gap between the technology available in the laboratory and the need to run samples in the field. Users were forced to either deal with inferior process analytical technology, or wait for the lab to run a sample. Wasson-ECE has bridged that gap with Eclipse. Now you have the ability to run advanced chromatography on-line. Now you can tap into the latest in sampling system, detector, and column technology.

Look for Eclipse to reveal the future of process GC to you. Contact Wasson-ECE today with your process analytical challenge!

Ultra-Trace CO and CO₂ in Ethylene and Propylene



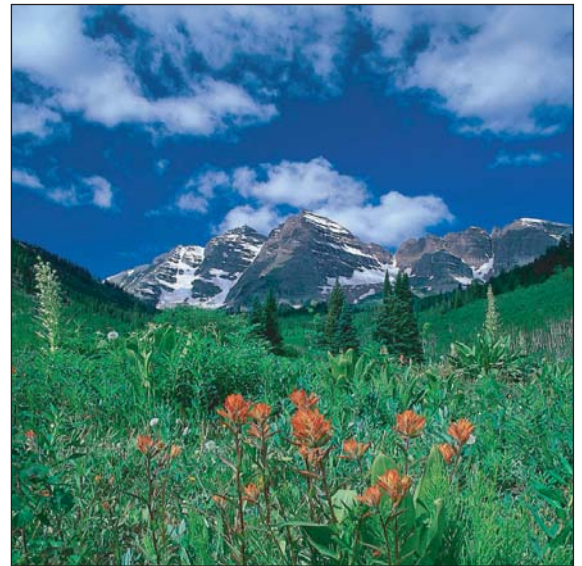
Trace CO and CO₂ On-Line

A Valco pulsed discharge helium ionization detector is configured for the analysis of trace fixed gases in ethylene and propylene. The method has a lower detection limit of 15 ppb for CO and 5 ppb for CO₂.

A Unique Solution for the Analysis of Permanent Gases in High Purity Monomers

The production of high quality monomers demands the best analytical technology available. Contaminates at low concentrations can adversely affect the quality of the resulting polymer. Additionally, certain monomer impurities can cause irreversible damage to polymerization catalysts.

As an introduction to the potential of Eclipse, Wasson-ECE has developed an on-line solution for the analysis of permanent gases in monomers at ultra-trace levels. Using capillary columns and specialty detector techniques, this system detects CO and CO₂ at low ppb levels. In addition to the carbon oxides, this method can also measure hydrogen, argon/oxygen, nitrogen, and methane at low ppb ranges.



WASSON - ECE
INSTRUMENTATION

sales@wasson-ece.com
www.wasson-ece.com

101 Rome Court
Fort Collins, CO 80524

Ph: 970-221-9179
Fx: 970-221-9364

Please contact us for more information



Engineered Solutions, Guaranteed Results.